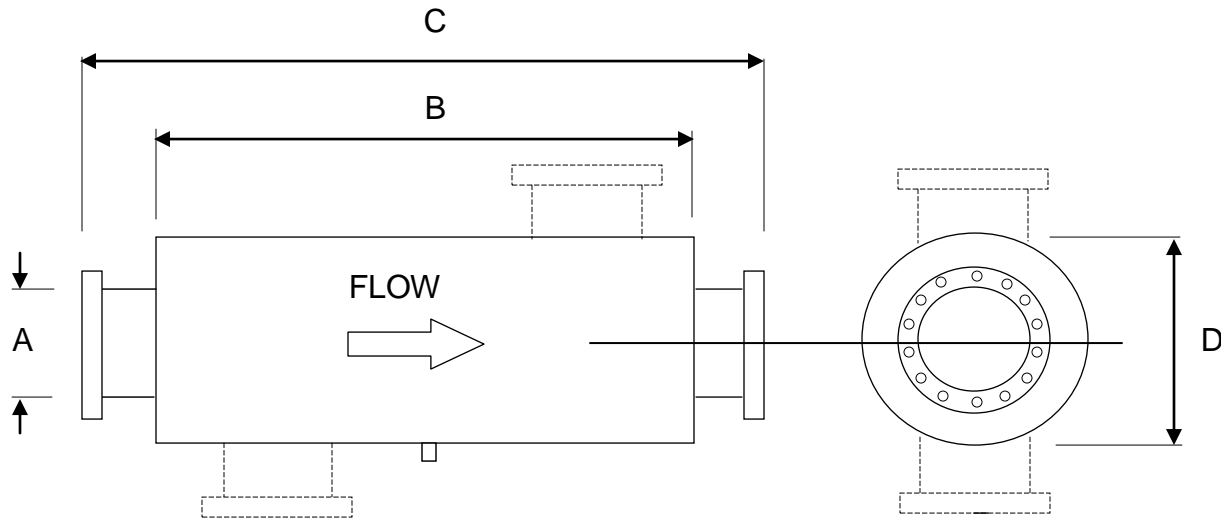




CE20SA75 DNVGL-CP-0282-Type Approved Spark Arresting Silencers (Up to 20dba Attenuation)



CE20SA75

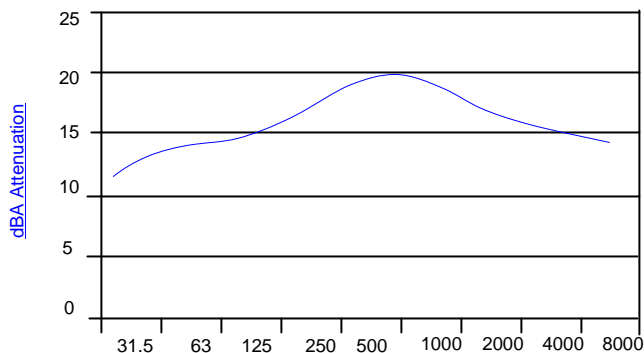
(END INLET-END OUTLET)

CE20SA75S

(SIDE INLET-END OUTLET)

| ØA | B | C | ØD |
|-----|------|------|------|
| 75 | 500 | 650 | 280 |
| 100 | 650 | 800 | 330 |
| 125 | 800 | 950 | 380 |
| 150 | 950 | 1100 | 410 |
| 200 | 1200 | 1350 | 550 |
| 250 | 1300 | 1500 | 650 |
| 300 | 1520 | 1720 | 760 |
| 350 | 1700 | 1950 | 920 |
| 400 | 1830 | 2080 | 1000 |

* Larger sizes available on request



Octave Band Hz Frequency

APPLICATION

CE20SA75 Spark Arresting series is a performance reactive silencer recommended for those conditions where the ambient noise levels in the environment is moderate and type approval is compulsory. Offers excellent cross frequency attenuation. For use with two and four cycle engines.

PERFORMANCE

Attenuation of up to 20dba is attained from the outlet of CE20SA75 / CE20SA75S range of silencers under open-field conditions.

FEATURES

- Mild steel body with choice of flanges (JIS, ANSI, PN10, Table D, etc.)
- Coated with heat-resistant aluminum paint (Up to 600°C) Sandblasting Optional
- Can be mounted either vertically or horizontally without affecting performance
- Choice of materials of construction (MS, SS304, SS316, etc.)
- Modifications and other sizes available upon request

CORD EXHAUST ENGINEERING PTE LTD

69 TECH PARK CRESCENT, SINGAPORE 638073.

TEL NO : 67442689 FAX NO : 67472217 E-MAIL : enquires@cordexhaust.com.sg WEBSITE : www.cordexhaust.com.sg